



MINISTRY OF PUBLIC WORKS AND HOUSING
THE REPUBLIC OF INDONESIA

THE **REKOMPAK** APPROACH : REBUILDING COMMUNITIES AFTER DISASTERS

Usman Hermanto

Head of REKOMPAK Unit Work
Directorate General of Human Settlement
Ministry of Public Works and Housing



Earthquake Jogja and
Jateng (2006)



Earthquake and Tsunami
Pangandaran (2006)



Merapi Eruption
Yogyakarta(2010)



Sinabung Eruption Karo
North Sumatera
(2013)



Experience



WHAT IS THE REKOMPAK

- ❑ Rehabilitasi dan Rekonstruksi Masyarakat dan Permukiman Berbasis Komunitas;
- ❑ Community based-Settlement Rehabilitation and Reconstruction Project (CSRRP);
- ❑ REKOMPAK is the name of a community-driven disaster-based resettlement project that is oriented towards disaster risk reduction;
- ❑ REKOMPAK is a project under the Directorate General of Human Settlements, Ministry of Public Works and Housing





WHY CDD?

When the tsunami hit Aceh Dec 26, 2004 – the KDP (rural community empowerment) and the Urban Poverty Project were on-going

- Community facilitators already on the ground;
- Previous experience in community-based kampung improvement and community-based housing.

CDD implemented by 15,000 households (REKOMPAK) and a few others like UN-Habitat. The rest: by contractors.

Result:

- much more cost-effective and much less deviations compared to contractor based approach;
- communities empowered (more important result).

Java earthquake and Post Mount Merapi Eruption

➔ **100% CDD implemented**





Most households don't waste money for their own house
(Aceh experience, in US\$)

| | Contractor | Community | Gap Procentage | |
|-------------------------|----------------|--------------|-----------------|---------------|
| Materials | 2,800 | 2,100 | 25% | Savings* |
| Labour | 1,200 | 960 | 20% | Partly family |
| Overhead | 600 | 120 | 80% | |
| Profit | 400 | - | 100% | |
| | 5,000 | 3,180 | 36,4% | Difference |
| Facilitation | - | 480 | | Empowerment |
| Infra, facilities | 2,500 | 1,590 | | |
| TOTAL DIFFERENCE | 7,500 | 4,770 | 36% | |

* Project management included
Community tendering, own and salvaged material





APPROACHMENTS

- **Community Based Development**

- The main actor is the target community
- Participatory planning, design and implementation
- Every stage of project cycle invite community involvement
- Gender responsive

- **Accountability**

- The expenditure of grant follows financial norms
- The expenditure of grant follows CSRRP financial guidance
- Giving wide opportunity for internal and external financial auditing

- **Transparency**

- Every party or person has opportunity to access information
- Serving project publication on :

www.rekompak-ciptakarya.org

www.pu.go.id





PROJECT COMPONENTS

- **Technical Assistance and Facilitation**

Technical Assistance and Facilitation are given by mobilizing team of facilitators supported with operational fund to facilitate the community in rebuilding their houses and village infrastructures based on the Disaster Risk Reduction based Community Settlement Plan.

- **Block Grant**

1. **Housing Block Grant (BDR)**

The allocation of Housing Grant (BDR) for each house.

2. **Residential Block Grant (BDL)**

The allocation of Residential Fund grant for each village or kelurahan based on the level of damage

*The house block grant is not a compensation for the damage caused by the disaster, but it is a **stimulus** to help accelerate the recovery of the community settlement condition*





IMPLEMENTATION STRATEGY

1. Encouraging community involvement in every stage of the project cycle

- Providing intensive socialization (information dissemination through various media community meeting, public advertisement, etc);
- Active women involvement

2. Quality Assurance

- Providing serial training matched with cycle of project;
- Providing technical guidance;
- Dissemination and expert group meeting;
- Providing regular monitoring and evaluation at every level

3. Support Local Government involvement

- Consultation and coordination;
- Local government budget sharing for CSRRP Replication;
- Workshop of CSP positioning on local government planning and budgeting;
- Wider role of local government in monitoring and evaluation





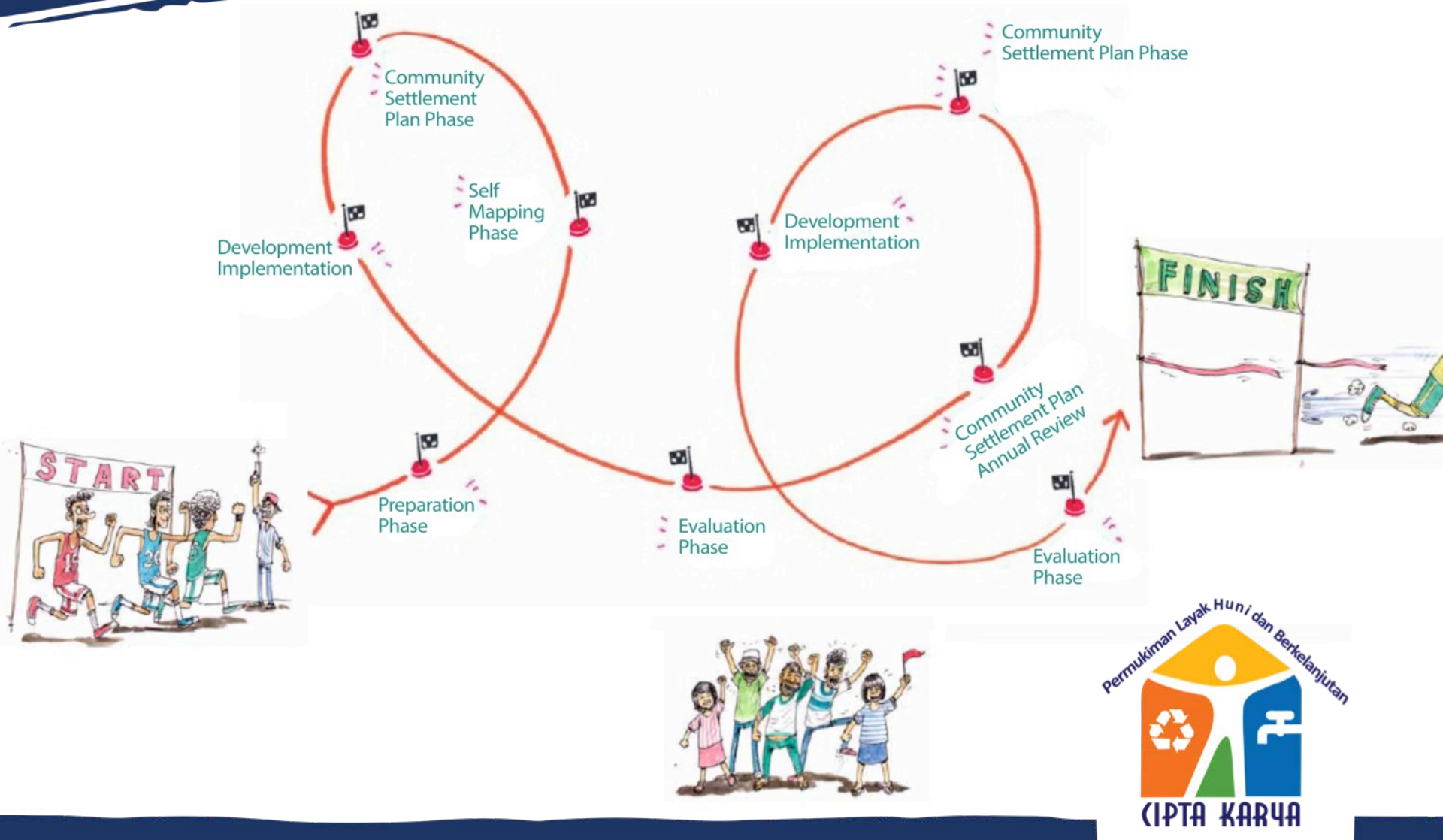
IMPLEMENTATION OF QUALITY ASSURANCE

1. Form a group of beneficiaries. Each group consists of 10 to 15 members;
2. Technical Assistance and Facilitation are given by mobilizing team of facilitators supported with operational fund to facilitate the community in rebuilding their houses and village infrastructures;
3. Facilitator work in a team. Each team consists of one coordinator, two facilitators technique, a financial facilitator, a social facilitator and 4 building controller/infrastructure controller;
4. A team of facilitators assist the construction of 100 units - 150 units of permanent housing;
5. The duration time of completion of construction of the permanent house every team facilitator is 4 months, and;
6. Provide training and technical guidance series in accordance with the stages of its activities;
7. Financial aid disbursed in 3 installments.





CSRRP/REKOMPAK CYCLE



PREPARATION PHASE



COMMUNITY INVOLVEMENT



Coordination



Socialization



FGD



Consolidation



Hazard Mapping



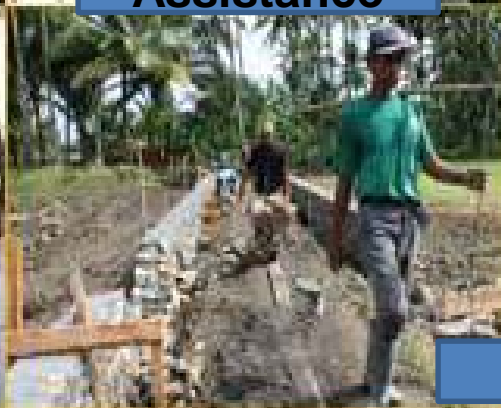
Technical Assistance



Synchronization and Channelling



Training



Implementation



PARTICIPATORY PLANNING PROCESS





COMMUNITY SETTLEMENT PLAN (CSP)

CSP is spatial plans at the village for a period of 5 years which is based on **aspirations, needs and aspirations of the community** to improve the environmental conditions of settlement and support community preparedness for disasters.

- **Objective**

- As means of community learning of settlement planning in response to disaster risk reduction;
- Providing general guidance for infrastructure grant utilization;
- To accomodate community needs and action plan.

- **Content**

- Existing figure;
- Damaged map;
- Analysis;
- Plan (infrastructure, community facilities, social and environment management, community agreement, and construction priority will be done on the first year)

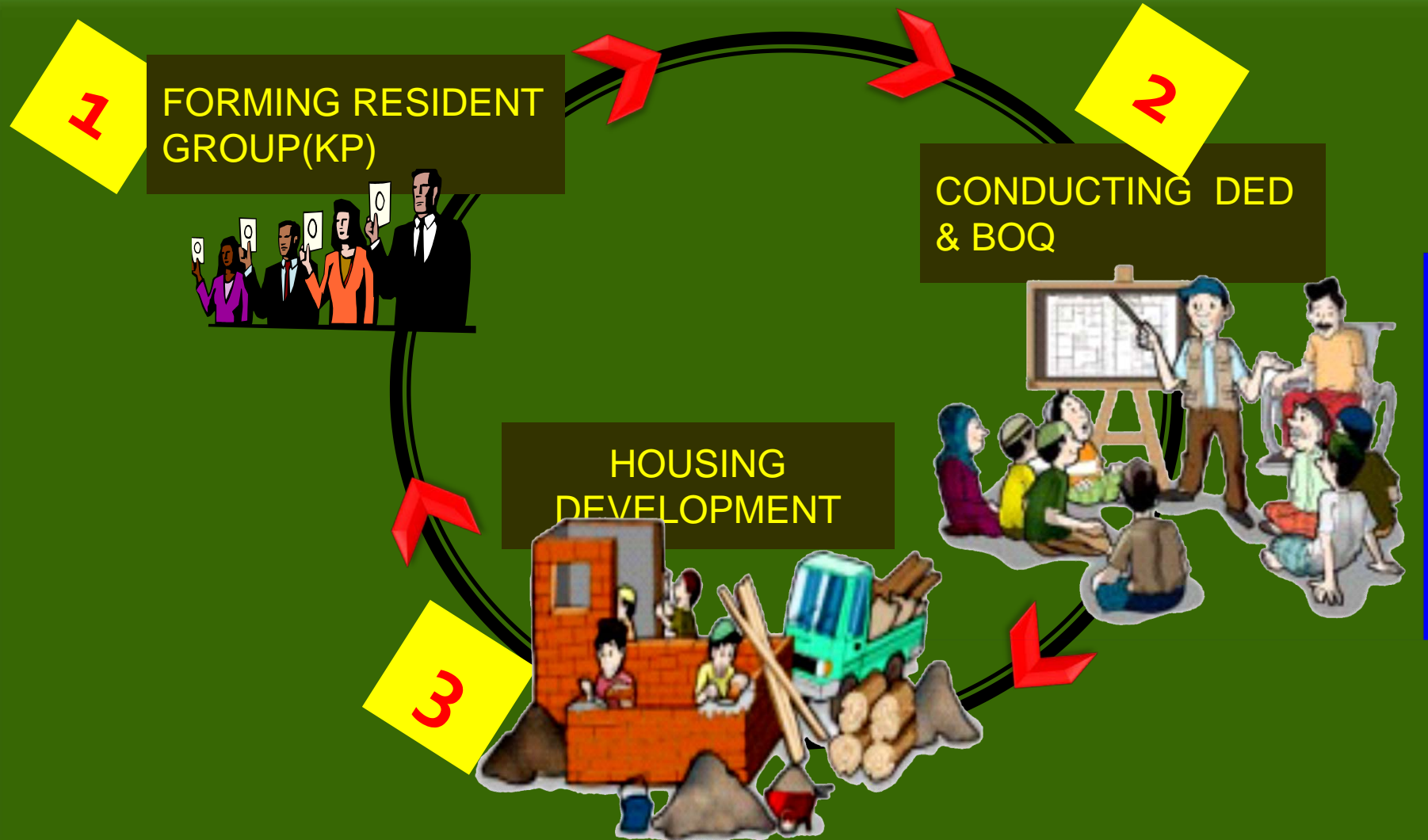




COMMUNITY SETTLEMENT PLAN (CSP)



HOUSING DEVELOPMENT PHASE



HOUSING DEVELOPMENT PHASE

2

CONDUCTING DED
& BOQ

1

FORMING RESIDENT
GROUP





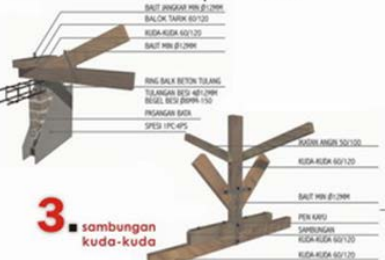
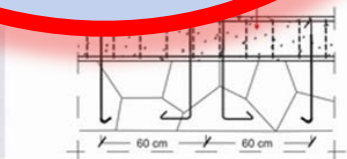
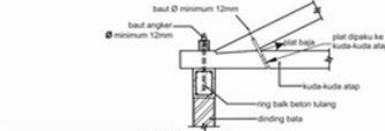
DEBRIEFING AND LEARNING PROCESS FOR EARTH-QUAKE RESISTANT HOUSE THEORY WAS IMPLEMENTED IN THE FIELD

1. pembalokan



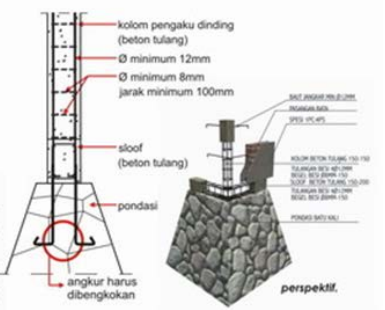
perspektif.

2. hubungan kuda-kuda dan kolom



3. sambungan kuda-kuda

5. hubungan kolom, sloof dan pondasi



3

HOUSING DEVELOPMENT

HOUSING DEVELOPMENT PHASE



Land Preparation



Construction



Core House





Grant = only incentive,
i.e. : main structure, roof

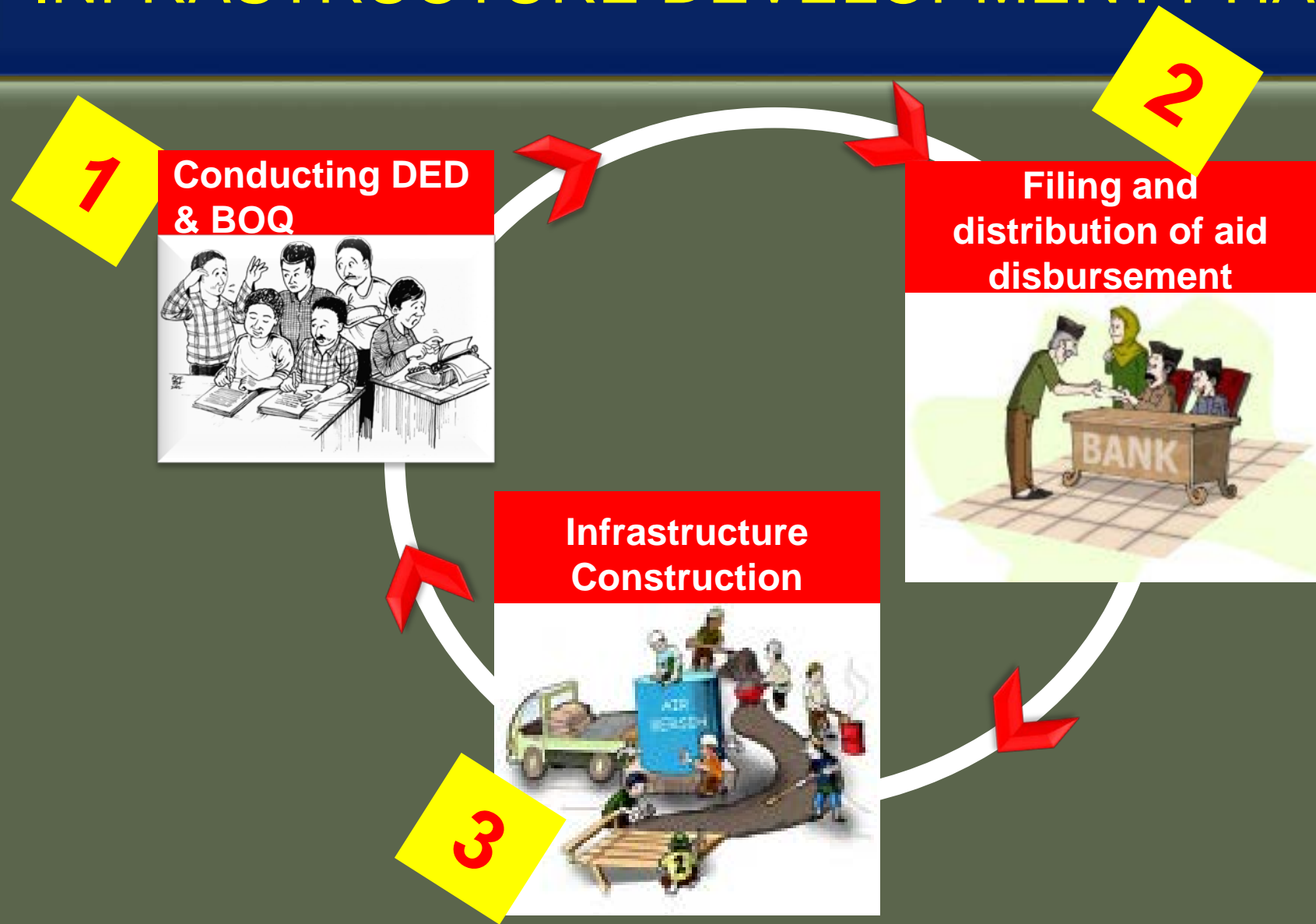
Housing Grant

STIMULUS

**+ Community
own fund**



INFRASTRUCTURE DEVELOPMENT PHASE



INFRASTRUCTURE DEVELOPMENT PROCESS



Material Survey



Community Procurement

Implementation

Quality Control



COMMUNITY INFRASTRUCTURES ON THE VILLAGE



DRAINAGE



SANITATION



EVACUATION ROUTE



BRIDGES



WATER SUPPLY



**RETAINING
WALLS**

COMMUNITY INFRASTRUCTURES ON THE RESETTLEMENT SITE



WASTE PROCESSING



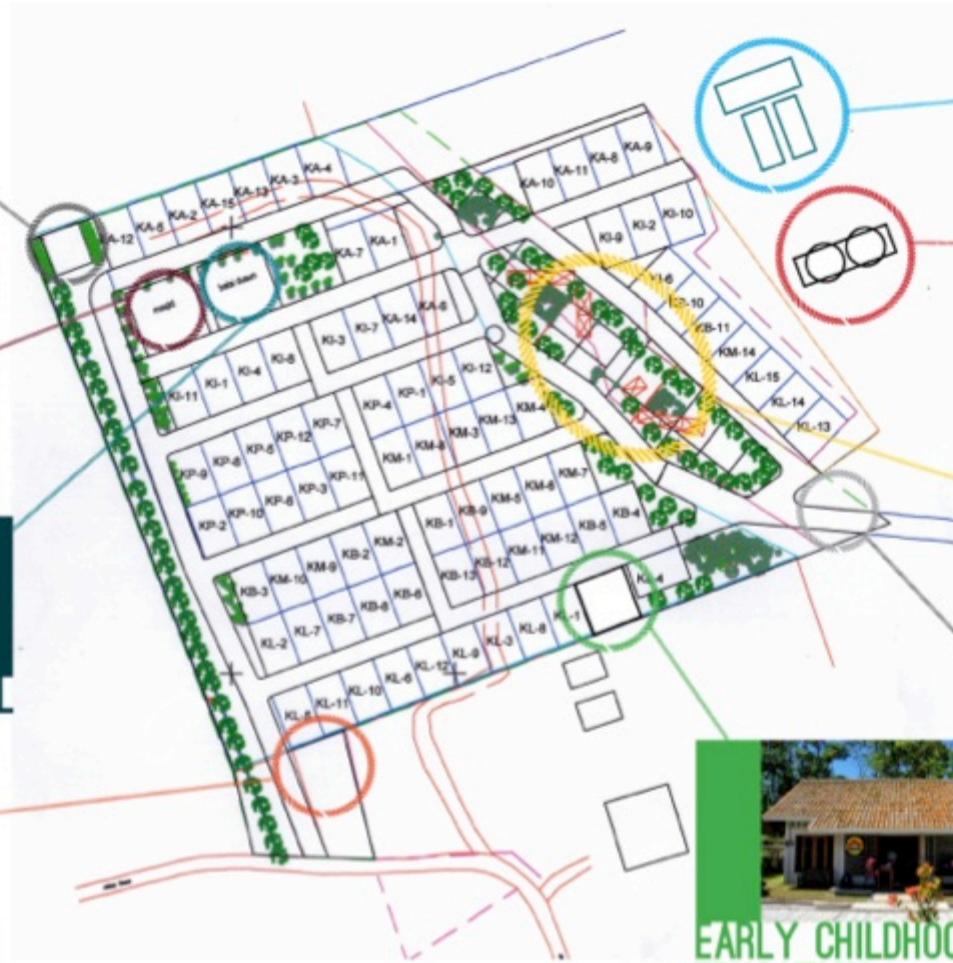
MOSQUE



VILLAGE HALL



PAVILION



COMMUNAL CAGES



BIOGAS



GREEN OPEN SPACE



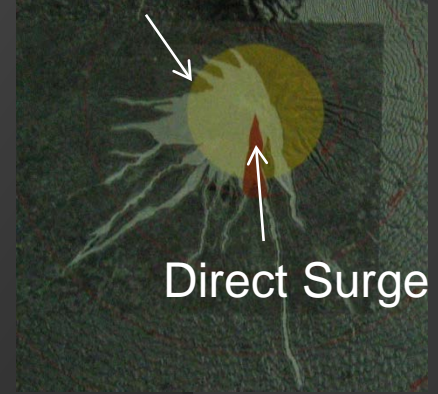
EARLY CHILDHOOD
EDUCATION



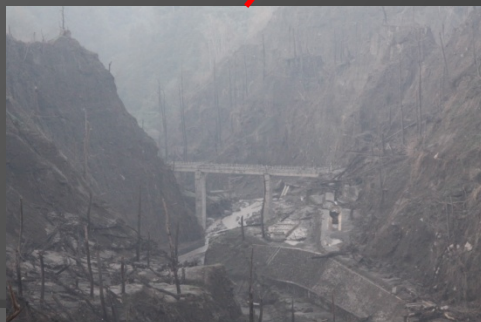
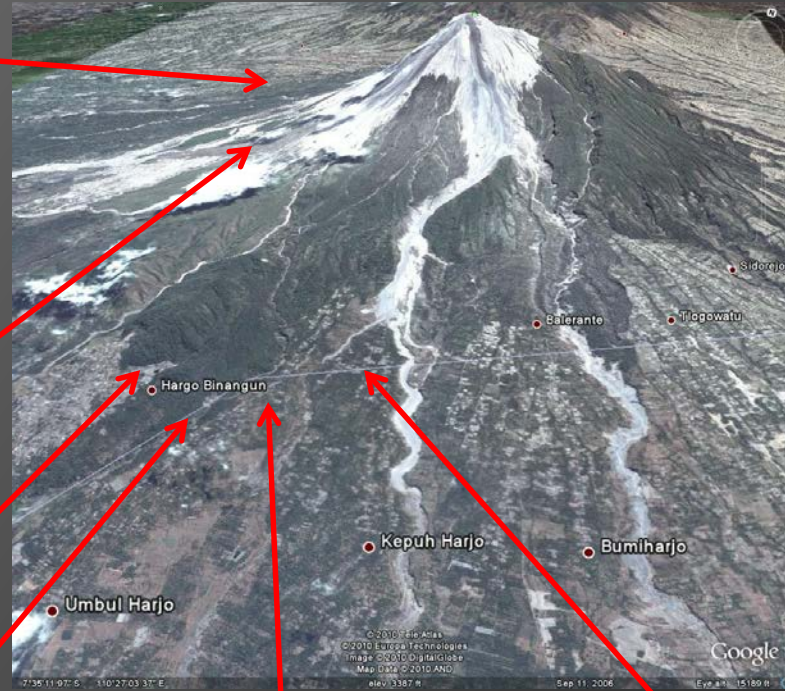
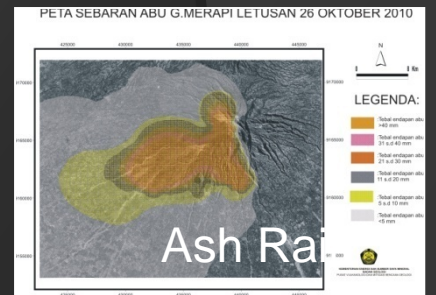
COMMUNAL WASTE
WATER TREATMENT

MERAPI ERUPTION

GOOGLE
3D : MT MERAPI
Hot Cloud



PVMBG Maps



Damaged Water Supply System



Burned Settlements

Interrupted Productive Sectors

IMPACT OF MERAPI ERUPTION



**About 300 people died
and 500 people were
injured**

**about 3.500 housing unit
and infrastructure in 101
villages were damaged,
including the 8 villages
located at a radius of 3 km
from the peak of Merapi
suffered serious damage.**



CSRRP ACTIVITIES ON POST MERAPI ERUPTION

Action Plan for the Rehabilitation and Reconstruction of post Merapi eruption disaster 2010 areas, the rehabilitation and reconstruction of housing and settlements sector are implemented by the approach of community relocation from the disaster prone area III to a safer area using the CSRRP/REKOMPAK scheme.



Relocation was conducted at community owned land (self relocation) and at land prepared by local governments (collective relocation) carried out in stages in accordance with the land and community readiness to join the relocation.



REHAB/RECON ACTIVITIES

| Sector | Activities |
|---------------------------------|--|
| Housing | Provision of Land for settlement; Settlement Infrastructure Development and Environment; Electrical Installation, Installation of clean water and sanitation settlement; Development settlement These public and social facilities, etc. |
| Infrastructure | Rehabilitation District roads, Evacuation road construction, road axle village; Irrigation Rehabilitation Network, Weirs; Recovery provision of water resources; Provision of disaster reduction communication devices etc |
| Productive economic development | Rehabilitation of agricultural irrigation networks and facilities to support the farm. Provision of food and shelter dairy barn, Livestock biogas installations; cattle sheds; seed pool repair, Training economic development, and rehabilitation markets etc |
| Social | Rehabilitation health and education facilities; Revitalization of the tourist area; Assistance Psychology and severe mental disorders, Assistance arts groups etc. |
| Cross-Sector | Construction of government office complex environmental infrastructure; Rehabilitation of houses of worship; Disaster Risk Reduction Training etc. |

16 SPOTS RESETTLEMENT SITE INDIY

LOKASI HUNTAP :

A. DESA KEPUHARJO

1. BATUR
2. PAGERJURANG
3. Bulaksusukan

B. DESA UMBULHARJO

4. KARANGKENDAL
5. PLOSOKEREP

C. DESA WUKIRSARI

6. GONDANG 2
7. Gondang 3
8. DONGKELSARI

D. DESA ARGOMULYO

9. KUWANG
10. RANDUSARI

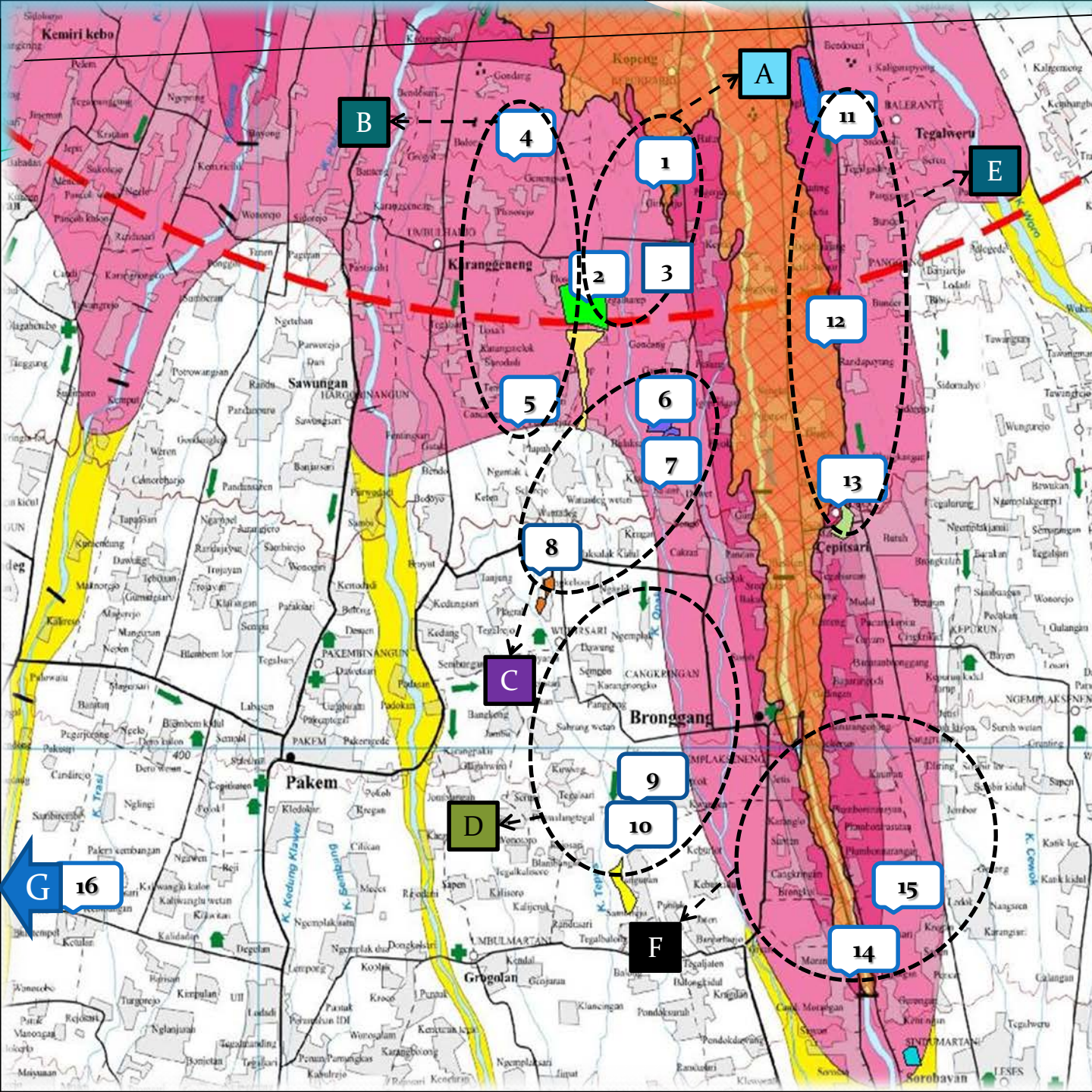
E. DESA GLAGAHARJO

11. GADING
12. JETIS SUMUR
13. BANJARSARI

F. DESA SINDUMARTANI

14. KURIPAN
15. JLAPAN

**G. DESA SENDANG
AGUNG**



EXAMPLES OF HOUSE DEVELOPMENT AND EXTENSION OF CORE HOUSES FACILITATED BY CSRRP – BY AND FOR THE VICTIMS WITH A STIMULUS OF IDR 30 MILLION





HOUSING



HOUSING & INFRASTRUCTURES



SOCIAL AND PUBLIC FACILITIES



ACHIEVEMENT

POST MERAPI ERUPTION YOGYAKARTA & CENTRAL JAVA

Establishment of 2,608 housing units, 476 units in Central Java and 2,132 units in DI. Yogyakarta. within **31 months**

Rehabilitate and reconstruct 1,037 points in the outside of resettlement site and 267 in resettlement site in 106 villages

Have done 506 training activities, attended by 12.944 participants, 28% (3.567) of them were females

Total funds
172,528,577,000 (IDR)
equivalent 17 Million USD

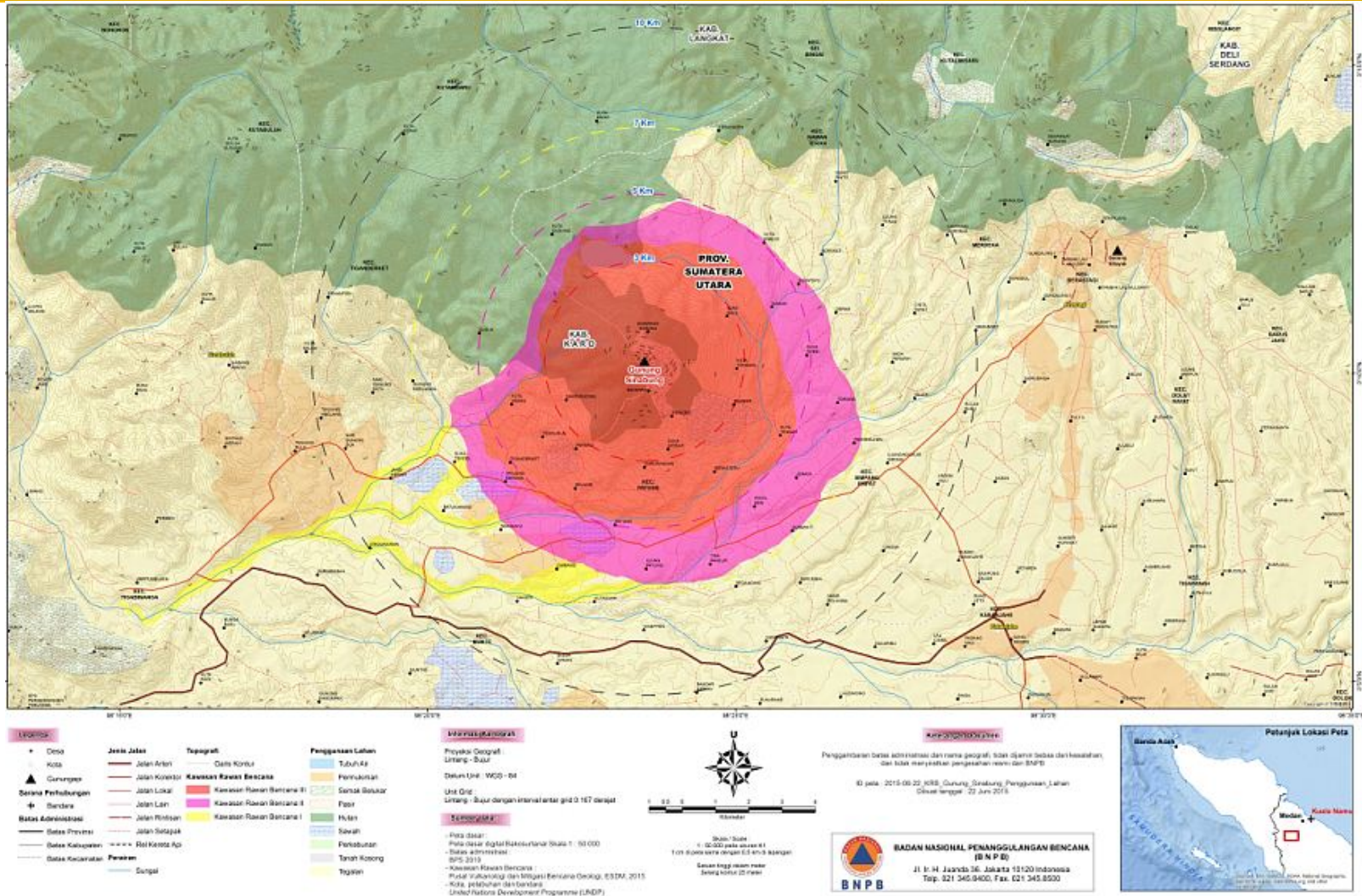
SINABUNG ERUPTION 2013



**About 2050 households had to
be relocated and about 650
households could potentially
be relocated**

**About 15.000 people were
evacuated**

MOUNT OF SINABUNG DANGEROUS ZONE MAP





Post-disaster rehabilitation and reconstruction of eruptions Sinabung 2013 through relocation approach will be done in three phase:

1. The first phase, 370 households of three villages, coming from Bekerah Village, Sukameriah and Simacem;
2. The second, For 1,683 households of four villages from Gurukinayan Village Kutatonggal, Berastepu and Gamber;
3. The third, For the potential of relocation for 648 households of four villages, which are currently identified from Jeraya Village, Kuta Tengah, Pintu Besi dan Tiga Pancur.

Since August 2016, REKOMPAK has actively funded 1,683 households in the second phase relocation activities.

Mt. Sinabung Activity



PARTICIPATORY PLANNING PROCESS



EARTHQUAKE RESISTANT HOUSING CONSTRUCTION





HOUSING

CHALLENGE

POST SINABUNG ERUPTION



Land for Resettlements is a big problem

Capability of Karo Regency should be enhanced

How to collaborate Karo Regency and community

High demand of construction but less supply on material and labor

PROGRES as of End of June

| No | Hampanan | Jumlah Aron Pembanguna n | Jumlah KK | Desa Asal | | | | Keterangan |
|----|-------------------------|--------------------------------|--------------|-----------------|------------|------------|-------------|-----------------------------|
| | | | | Kuta Tonggal | Gamber | Berastepu | Gurukinayan | |
| 1 | Desa Gajah | 1 | 40 | | | 40 | | Rumah selesai 100% |
| 2 | Desa Nang Belawan 1 | 2 | 54 | 16 | 20 | 18 | | Rumah selesai 100% |
| 3 | Desa Nang Belawan 2 | 20 | 346 | 2 | 3 | 338 | 3 | Proses Pembangunan BDR |
| 4 | Desa Kuta Mbelin 1 | 1 | 7 | | | | 7 | Rumah selesai 100% |
| 5 | Desa Kuta Mbelin 2 | 1 | 12 | | | 12 | | Proses Pembangunan BDR |
| 6 | Desa Kuta Mbelin 3 | 5 | 98 | | | | 98 | Proses Pembangunan BDR |
| 7 | Desa Kuta Mbelin 4 | 10 | 177 | | | | 177 | Penyelesaian masalah sosial |
| 8 | Desa Ndokum Siroga 1 | 5 | 68 | | 48 | 15 | 5 | Proses Pembangunan BDR |
| 9 | Desa Ndokum Siroga 2 | 3 | 58 | 19 | 36 | 3 | | Proses Perencanaan |
| 10 | Desa Surbakti 1 | 4 | 67 | 67 | | | | Proses Pembangunan BDR |
| 11 | Desa Surbakti 2 | 12 | 218 | | | | 218 | Proses Pembangunan BDR |
| 12 | Desa Surbakti 3 | 6 | 87 | | 28 | 59 | | Proses Pembangunan BDR |
| 13 | Desa Manuk Mulia | 1 | 9 | | | | 9 | Proses Pembangunan BDR |
| 14 | Desa Salit 1 | 1 | 33 | | | | 33 | Rumah selesai 100% |
| 15 | Desa Kuta Kepar/Salit 2 | 1 | 50 | | | | 50 | Persiapan Pembangunan BDR |
| 16 | Desa Singa | 1 | 21 | | | | 21 | Proses Perencanaan |
| 17 | Desa Kacaribu | 1 | 26 | | | | 26 | Proses Perencanaan |
| 18 | Desa Samura | 0 | 0 | | | | 0 | Batal |
| 19 | Mandiri Tersebar 1 | 1 | 10 | | 1 | 8 | 1 | Proses Pembangunan BDR |
| 20 | Mandiri Tersebar 2 | 1 | 16 | | 1 | 11 | 4 | Proses Pembangunan BDR |
| 21 | Mandiri Tersebar 3 | 1 | 10 | | | 2 | 8 | Proses Perencanaan |
| 22 | Mandiri Tersebar 4 | 1 | 7 | | 1 | | 6 | Proses Perencanaan |
| 23 | Mandiri Tersebar 5 | 1 | 14 | | | 1 | 13 | Proses Perencanaan |
| | T o t a l | 80 | 1.428 | 104 | 138 | 507 | 679 | |

Huntap @ Desa Gajah (40 HH)



Progress:

- Pencairan Termin 1, 2 & 3 : 100%
- Progres Fisik : 100%

Kondisi Lapangan:

- Semua rumah sudah selesai 100%.
- Beberapa rumah sudah dihuni

Huntap @ Desa Nang Belawan 1 (54 HH)



Progres:

- AP Jumajalang pencairan Termin 1, 2 & 3 : 100%
- AP Jumajalang 2 pencairan Termin 1 & 2 : 80%
- Progres Fisik Rata-rata: 100%

Kondisi Lapangan:

- Semua rumah sudah selesai 100%.

Huntap @ Desa Kuta Mbelin 1 (7 HH)



Progres Pencairan dan Pelaksanaan Pembangunan BDR Desa Kuta Mbelin 1

- Pencairan Termin 1 & 2 : 100%
- Progres Fisik : 100%

Kondisi Lapangan

- Semua rumah sudah selesai 100%.

Huntap @ Desa Ndokum Siroga 1 (63 HH)



Progres Pencairan dan Pelaksanaan Pembangunan BDR Ndokum Siroga 1

- Pencairan Termin 1 : 50%
- Progres Fisik Rata-rata: 71,9%

Kondisi Lapangan

- 57 Rumah pekerjaan pemasangan atap .
- 6 Rumah pekerjaan pasangan dinding.

Huntap @ Desa Salit 1 (33 HH)



Progres Pencairan dan Pelaksanaan Pembangunan BDR Desa Salit 1

- Pencairan Termin 1 & 2: 80%
- Progres Fisik : 100%

Kondisi Lapangan

- Sudah dilakukan serah terima dengan warga

Huntap @Desa Surbakti 1 (67 HH)



Progres Pencairan dan Pelaksanaan Pembangunan BDR Desa Surbakti 1

- Pencairan Termin 1 & 2: 50% -89%
- Progres Fisik rumah rata-rata: 64%

Kondisi Lapangan

- 31 rumah pekerjaan pasang daun pintu & jendela
- 35 rumah pekerjaan dinding & ring balk
- 1 rumah pekerjaan sloof & kolom

Huntap @ Desa Surbakti 2 (218 HH)



Progres Pencairan dan Pelaksanaan Pembangunan BDR Desa Surbakti 2

- Pencairan Termin 1 Rata-rata: 40%
- Progres Fisik Rata-rata: 11,46%

Kondisi Lapangan

- Rata-rata pelaksanaan pekerjaan pemasangan kondisi dan alof

Huntap @ Desa Surbakti 3 (87 HH)



Progres Pencairan dan Pelaksanaan Pembangunan BDR Desa Surbakti 3

- Pencairan Termin 1 : 50%
- Progres Fisik Rata-rata : 33,8%

Kondisi Lapangan

- 3 rumah progres 100%
- 21 rumah pekerjaan sopi-sopi
- 24 rumah pekerjaan dinding & ring balk
- 21 rumah pekerjaan dinding
- 18 rumah pekerjaan kolom

Huntap @ Desa Kuta Mbelin 2 (12 HH)



Progres Pencairan dan Pelaksanaan Pembangunan BDR Desa Kuta Mbelin 2

- Pencairan Termin 1 : 50%
- Progres Fisik Rata-rata : 65%

Kondisi Lapangan

- 5 rumah pekerjaan atap
- 3 rumah pekerjaan rangka atap
- 4 rumah pekerjaan sopi-sopi

Huntap @ Desa Kuta Mbelin 3 (98 HH)



Progres Pencairan dan Pelaksanaan Pembangunan BDR Desa Kuta Mbelin 3

- Pencairan Termin 1 : 41%
- Progres Fisik Rata-rata : 7,0%

Kondisi Lapangan

- 21 rumah pekerjaan sloof
- 66 rumah pasang pondasi
- 10 rumah pekerjaan gali pondasi

Huntap @ Desa Kuta Mbelin 4 (177 HH)



Progres Pencairan dan Pelaksanaan Pembangunan BDR Desa Kuta Mbelin 4

- Pencairan Termin 1 : 0,0%
- Progres Fisik Rata-rata : 0,0%

Kondisi Lapangan

- Proses penyelesaian permasalahan sosial

Huntap @ Desa Manuk Mulia (9 HH)



Progres Pencairan dan Pelaksanaan Pembangunan BDR Desa Manuk Mulia

- Pencairan Termin 1 : 75%
- Progres Fisik Rata-rata : 74%

Kondisi Lapangan

- 3 rumah pekerjaan atap
- 6 rumah pekerjaan rangka atap

Huntap @ Desa Nang Belawan 2 (261 HH)



Progres Pencairan dan Pelaksanaan Pembangunan BDR Desa Nang Belawan 2

- Pencairan Termin 1 : 32%
- Progres Fisik Rata-rata : 5%

Kondisi Lapangan

- Proses dilapangan 201 pekerjaan galian pondasi dan 60 rumah pekerjaan pemasangan pondasi

Huntap @ Desa Singa (20 HH)



Progres Pencairan dan Pelaksanaan Pembangunan BDR Desa Singa

- Pencairan Termin 1 : 0,0%
- Progres Fisik Rata-rata : 0,0%

Kondisi Lapangan

- Hampan Singa sudah dilakukan verifikasi oleh Tim Verifikasi Lahan Tapak Rumah Kabupaten Karo.
- Dalam proses perencanaan

Through CSRRP/REKOMPAAK, the development is not only on physical projects, but it is also for human and community

Physical development was placed as a media to develop the community



MATUR NUWUN